



Septin 14 Polyclonal Antibody

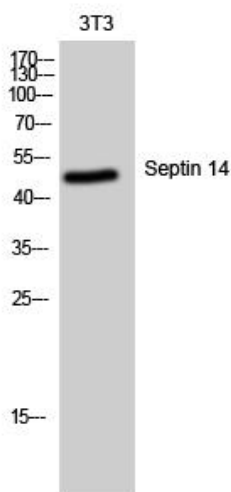
Catalog No	YP-Ab-04196
Isotype	IgG
Reactivity	Human;Rat;Mouse;
Applications	WB;IHC
Gene Name	45183
Protein Name	Septin-14
Immunogen	The antiserum was produced against synthesized peptide derived from human SEPT14. AA range:341-390
Specificity	Septin 14 Polyclonal Antibody detects endogenous levels of Septin 14 protein.
Formulation	Liquid in PBS containing 50% glycerol, 0.5% BSA and 0.02% sodium azide.
Source	Polyclonal, Rabbit,IgG
Purification	The antibody was affinity-purified from rabbit antiserum by affinity-chromatography using epitope-specific immunogen.
Dilution	WB 1:500-2000;IHC-p 1:50-300
Concentration	1 mg/ml
Purity	≥90%
Storage Stability	-20°C/1 year
Synonyms	SEPT14; Septin-14
Observed Band	50kD
Cell Pathway	Cytoplasm . Cytoplasm, cytoskeleton . Cell projection, axon . Cell projection, dendrite . Perikaryon . Cytoplasm, perinuclear region . Cytoplasmic vesicle, secretory vesicle, acrosome . Colocalizes with actin stress fibers (PubMed:17922164). Expressed in the perinuclear rim and manchette structure in early elongating spermatids during spermiogenesis (By similarity). .
Tissue Specificity	Testis-specific (at protein level).
Function	function:Involved in cytokinesis .,similarity:Belongs to the septin family.,
Background	SEPT14 is a member of the highly conserved septin family of GTP-binding cytoskeletal proteins implicated in membrane transport, apoptosis, cell polarity, cell cycle regulation, cytokinesis, and other cellular functions (Peterson et al., 2007 [PubMed 17922164]).[supplied by OMIM, Jul 2008],
matters needing attention	Avoid repeated freezing and thawing!



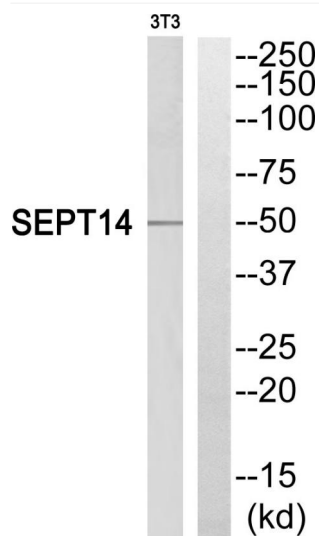
Usage suggestions

This product can be used in immunological reaction related experiments. For more information, please consult technical personnel.

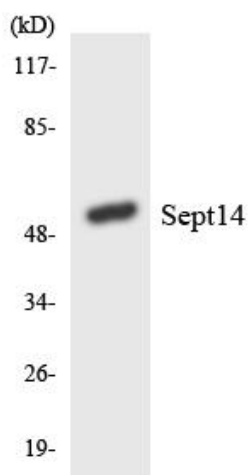
Products Images



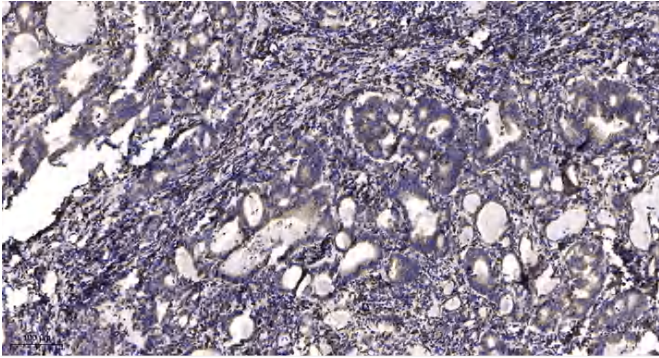
Western Blot analysis of 3T3 cells using Septin 14 Polyclonal Antibody



Western blot analysis of SEPT14 Antibody. The lane on the right is blocked with the SEPT14 peptide.



Western blot analysis of the lysates from Jurkat cells using SEPT14 antibody.



Immunohistochemical analysis of paraffin-embedded human Gastric adenocarcinoma. 1, Antibody was diluted at 1:200(4° overnight). 2, Tris-EDTA,pH9.0 was used for antigen retrieval. 3,Secondary antibody was diluted at 1:200(room temperature, 45min).